

## Press release



10 September - 4 November  
The Sumida Hokusai Museum

Tokyo, Japan...

The Sumida Hokusai Museum will hold a special exhibition to commemorate the 170th anniversary of Hokusai's death, on view from 10 September to 4 November 2019.

The Mogi-Honke Museum of Art opened in Noda, Chiba prefecture, in 2006, to exhibit the works of art collected by Mogi Shichizaemon, a twelfth-generation descendent of the Mogi honke (main line), who were among of the founders of Kikkoman Corporation.

The exhibition will display about one hundred works related to Hokusai. They will include famous series from its collection, including *Thirty-six Views of Mount Fuji*, *A Tour of the Waterfalls in Various Provinces*, and *Remarkable Views of Bridges in Various Provinces*, a sculpture of *Hokusai* by the sculptor Yabuuchi Satoshi, and rare privately commissioned prints by Hokusai's students being exhibited in Japan for the first time.

It will be the first opportunity to present a thorough introduction to this collection outside the museum itself.

## Exhibition Structure

**Section 1. A Trip to Mount Fuji - *Thirty-Six Views of Mount Fuji***

**Section 2. Waterfalls around Japan- *A Tour of the Waterfalls in Various Provinces***

**Section 3. A Look at Mysterious Bridges – *Remarkable Views of Bridges in Various Provinces***

**Section 4. Other Works of Hokusai**

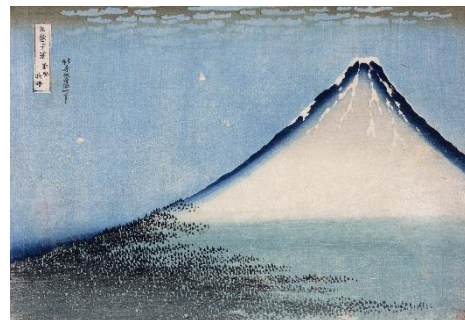
**Section 5. A Look at the Works of Hokusai's Disciples**

## Exhibition Highlights !

### ■ First term



*A Mild Breeze on a Fine Day, from the series Thirty-six Views of Mount Fuji*



*A Mild Breeze on a Fine Day, from the series Thirty-six Views of Mount Fuji (aizuri)*

Mogi-Honke Museum of Art also has a rare edition of *A Mild Breeze on a Fine Day* in aizuri (blue) version, commonly known as *Blue Fuji*.

### ■ Second term



*Under the Wave off Kanagawa, from the series Thirty-six Views of Mount Fuji*



*Rainstorm beneath the Summit, from the series Thirty-six Views of Mount Fuji*



*Kajikazawa in Kai Province, from the series Thirty-six Views of Mount Fuji*

The most famous of these, *A Mild Breeze on a Fine Day*, *Under the Wave off Kanagawa*, and *Rainstorm Beneath the Summit* are called “the Three Peaks” and popular worldwide.

## Section 1. A Trip to Mount Fuji - *Thirty-Six Views of Mount Fuji*

Hokusai produced the series *Thirty-six Views of Mount Fuji* when in his seventies. Mount Fuji looks differently depending on factors such as the season, time of day, weather conditions and location of the viewer. The mature artist Hokusai used a mix of novel compositions to depict a variety of views of Mount Fuji in a series of 46 woodblock pieces.

### > I Novel Compositions - Innovative Compositions

In the *Thirty-six Views of Mount Fuji* series, Hokusai produced works which are considered to have applied Western methods of painting by using geometrical calculations. Based on Mount Fuji's triangle, he effectively incorporates other motifs by using other similarly shaped triangles and combining circles and arcs to give a sense of the unexpected and to emphasize depth of perspective. Take note of Hokusai's many novelties and innovations.

### > II Majestic Nature and Time

*Thirty-six Views of Mount Fuji* fall under the category of paintings of famous places in the *ukiyo-e* genres. Before this series appeared, the paintings of famous places were generally of places people could imagine just by hearing the place's name. In his series, however, Hokusai presented pictures of Mount Fuji drawn from places that were not famous and is said to have thus established the art of landscape painting, different from the painting of famous places. *A Mild Breeze on a Fine Day*, *Under the Wave off Kanagawa*, and *Rainstorm Beneath the Summit* are representative works. By intentionally focusing on nature these works express nature's severity and change over time, giving the scenes a sense of mystery.

### > III Symbol of Edo – Depictions of Travelers' Sentiments

The *Thirty-six Views of Mount Fuji* give the impression of paintings focused on landscapes, but actually also show the daily life of the people of the Edo period and the customs of travel at that time. Since the people of Edo proudly considered Mount Fuji as their own belonging, Hokusai's drawings of Fuji showing the people and town of Edo must have been highly popular. By depicting travelers and local culture and customs, Hokusai likely sparked in viewers a longing to travel and visit Mount Fuji. Feel for yourself in these works the pride of the people of Edo and the sentiments of travelers to Mount Fuji.



## Section 2. Waterfalls around Japan-A Tour of the Waterfalls in Various Provinces

*A Tour of the Waterfalls in Various Provinces*, a series published after *Thirty-six Views of Mount Fuji* likewise takes a single subject, waterfalls throughout Japan, as its theme, depicting them in a variety of patterns. As in the saying "Different places, different customs" these depictions of waterfalls from the majestic flow of the great fall to the iwashimizu waterfall that flows over a rock surface show how art expression changes depending on the rock structure and the amount of water surrounding it. Be sure to see the eight waterfalls that flow in eight different expressions from Hokusai's dynamic brush.



*Kirifuri Falls at Mount Kurokamiyama in Shimotsuke Province, from the series A Tour of the Waterfalls in Various Provinces*



*Amidagataki Falls in the Far Reaches of Kiso Road, from the series A Tour of the Waterfalls in Various Provinces*

## Section 3. A Look at Mysterious Bridges – Remarkable Views of Bridges in Various Provinces

According to the dictionary, "奇(ki)" means "unusual, strange, remarkable." The title of the series, *Remarkable Views of Bridges in Various Provinces* means a unique view of various bridge structures located throughout Japan. Published after *Thirty-six Views of Mount Fuji*, this series also treats a single subject in various ways, and total 11 figures have been confirmed. While mentioned as famous bridges, bridges for which locations are unknown and bridges lost during the time of Hokusai were also included. Although not famous, these bridges inspired Hokusai to present their unusual, remarkable views. These works may also be called landscape paintings.



*The Hanging-cloud Bridge at Mount Gyōdōsan near Ashikaga, from the series Remarkable Views of Bridges in Various Provinces*



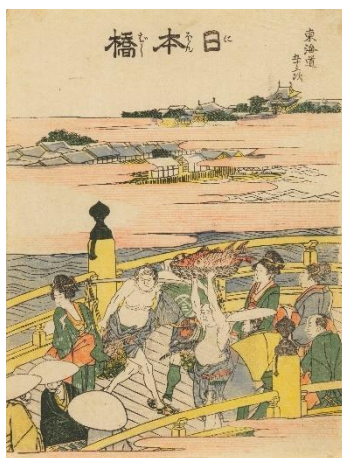
*The Suspension Bridge on the Border of Hida and Etchū Provinces, from the series Remarkable Views of Bridges in Various Provinces*

## Section 4. Other Works of Hokusai

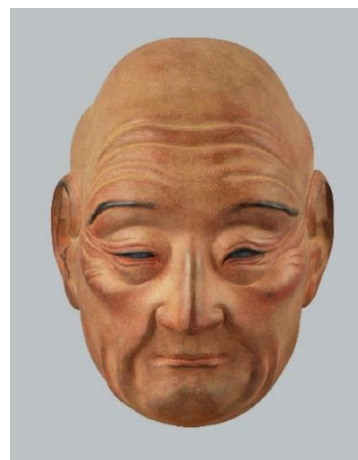
Mogi-Honke Museum of Art has many works in addition to the representative series of Hokusai introduced in Sections 1-3. *Imagery of the Poets*, a series of works composed in a vertical portrait format known as *naga ō-ban* are well worth seeing. *Famous Places on the Kiso Road in One View* depicts the Kiso Road route from Edo to Kyoto in a single woodblock color print. All 15 volumes of Hokusai's representative work *Hokusai Manga* (*Sketches by Hokusai*) are owned, as are the 108 images of Mount Fuji collected in *One Hundred Views of Mount Fuji*. The collection includes *nishiki-e* colored woodblock prints, *surimono* prints, and books printed with carved woodblocks. It also has a statue of Hokusai by sculptor Satoshi Yabuuchi. You can enjoy here the extensive collection of Hokusai's works and other related works.



*The Minister Tōru, from the series Imagery of the Poets*



*Nihonbashi, from the series The Fifty-three Stations of the Tōkaidō Road: Illustrated Book of Post Road Bells*



*Gakyō Rōjin Manji: Hokusai*

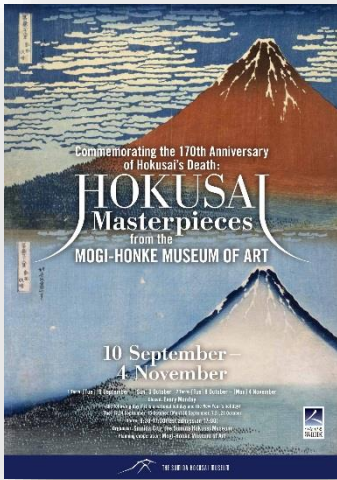
## Section 5. A Look at the Works of Hokusai's Disciples

The Mogi-Honke Museum of Art collects the works of Hokusai's disciples as well. Among the disciples are the well-known Totoya Hokkei, and also Shōtei Hokuju and Ryūryūkyō Shinsai, who specialized in Western-style landscape paintings. Their rare *nishiki-e* and *surimono* prints are owned by the Museum. Hokusai's status as a major figure has left his disciples in relative obscurity, and although evaluations are still forthcoming, their pieces contain many things worthy of note. The many works introduced in this section give one a feeling for this Museum's efforts to collect the art of Hokusai's disciples.



*Climbing Mount Fuji in Suruga Province, the Way to the Shrine, from the series Famous Places in the Provinces*





## Exhibition Overview

◆ **Exhibition title:** Commemorating the 170th Anniversary of Hokusai's Death: Hokusai Masterpieces from the Mogi-Honke Museum of Art

◆ **Term :** 10 September - 4 November

1 Term : [Tue] 10 September – [Sun] 6 October

2 Term : [Tue] 8 October – [Mon] 4 November

Closed: Every Monday

(the following day if it is a national holiday and the New Year's holiday)

[Tue] 17,24 September, 15 October, [Mon] 30 September, 7,21,28 October

◆ **Organizer :** Sumida City, The Sumida Hokusai Museum

◆ **Planning cooperation :** Mogi-Honke Museum of Art

◆ **Contact :** The Sumida Hokusai Museum

◆ **Admission Fees :**

	Adults	H.S / Univ. Students	65 and over	J.H.S Students	Disabled peoples	Elementary school students
Individual	¥1,200	¥900	¥900	¥400	¥400	Free
Group	¥960	¥720	¥720	¥320	¥320	Free

\*Group admission applies to 20 or more paying adults.

\*Students in elementary school and younger are admitted discount of charge

\*Junior high school, high school, and university students (including technical college, vocational school, and special training college students) will be requested to show student ID.

\*Adults 65 and over will be requested to show a document verifying age.

\*Persons with a certificate such as the following plus one accompanying person are admitted free of charge: physical disability, intellectual disability, rehabilitation, mentally handicapped health and welfare, atomic bomb victim health notebook, etc.

(Please show your certificate at time of admission.)

\*Use of these tickets is limited to the day on which the exhibition is visited, and allow you to see all exhibition room

## [The Sumida Hokusai Museum]

**Hour :** 9:30-17:30 (Last admission 17:00)

**Colsed :** Every Monday

**Address :** 2-7-2 Kamesawa, Sumida-ku, Tokyo, 130-0014, Japan

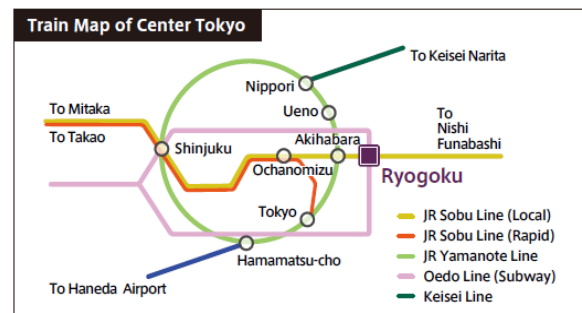
**Tel :** 03-6658-8936

**Official web site:** <https://hokusai-museum.jp/mogihonke>

**Official Twitter:** <https://twitter.com/HokusaiMuseum>

**Official FB:**

<https://www.facebook.com/THE.SUMIDA.HOKUSAI.MUSEUM/>

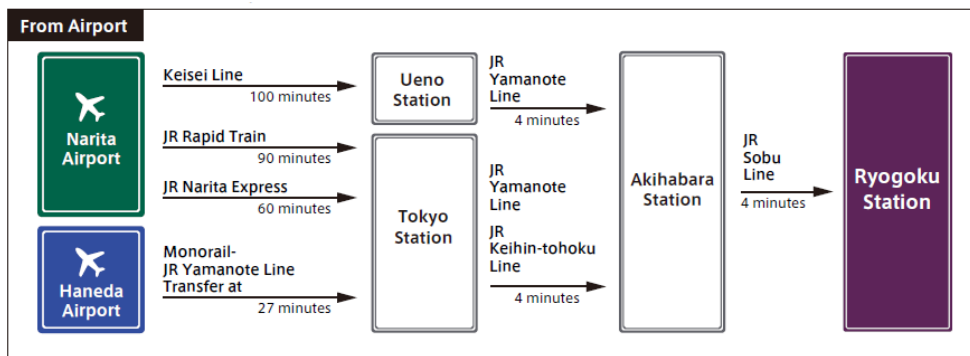


## ◆ Access

\*5-minute walk from the Toei Oedo Line Ryogoku Station

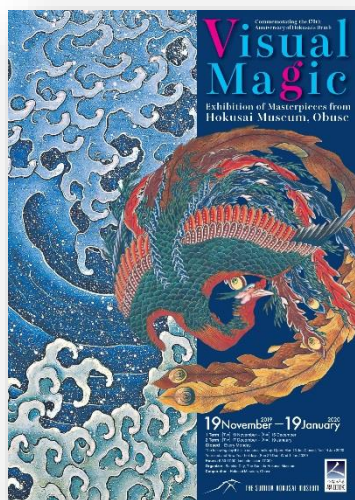
\*9-minute walk from JR Sobu Line Ryogoku Station East exit

\*5-minute by Sumida Loop Bus from the JR Sobu Line Kinshicho Station North exit



## Exhibition Next !

### Visual Magic: Exhibition of Masterpieces from Hokusai Museum, Obuse, Commemorating the 170th Anniversary of Hokusai's Death



To commemorate the 170th anniversary of Katsushika Hokusai's death, our museum and Hokusai Museum, Obuse have joined together to organize a pair of exchange exhibitions. Hokusai Museum, Obuse is located in Obuse in Nagano Prefecture, a place that Hokusai visited during his later years. The theme of the Sumida Hokusai Museum is "Visual Magic". It probes the astonishing appeal we find in Hokusai's works when we realize that he does not depict his subjects simply as they are, but manages to add unnatural structural elements, without making the resulting work appear unnatural. This exhibition is thus a rare opportunity to see nearly 120 works from Hokusai Museum, Obuse collection on display elsewhere than in that museum. The works on display include brush-drawing paintings from Hokusai's early to his late periods as well as his iconic *Thirty-six Views of Mount Fuji* and other polychrome prints. We hope that you will take this opportunity to enjoy them at the Sumida Hokusai Museum in Tokyo.

◆ **Term : 19 November - 19 January**

1 Term : [Tue] 19 November – [Sun] 15 December

2 Term : [Tue] 17 December – [Sun] 19 January

Closed: Every Monday

The following day if it is a national holiday. Open: Mon 13 Jan Closed: Tue 14 Jan 2020

Year end and New Year holidays (Sun 29 Dec- Wed 1 Jan 2020)

◆ **Organizer** : Sumida City, The Sumida Hokusai Museum ◆ **Cooperation** : Hokusai Museum, Obuse

◆ **Admission Fees**

	Adults	H.S / Univ. Students	65 and over	J.H.S Students	Disabled peoples	Elementary school students
Individual	¥1,200	¥900	¥900	¥400	¥400	Free
Group	¥960	¥720	¥720	¥320	¥320	Free

\*Group admission applies to 20 or more paying adults.\*Students in elementary school and younger are admitted discount of charge\*Junior high school, high school, and university students (including technical college, vocational school, and special training college students) will be requested to show student ID.\*Adults 65 and over will be requested to show a document verifying age.\*Persons with a certificate such as the following plus one accompanying person are admitted free of charge: physical disability, intellectual disability, rehabilitation, mentally handicapped health and welfare, atomic bomb victim health notebook, etc. (Please show your certificate at time of admission.)\*Use of these tickets is limited to the day on which the exhibition is visited, and allow you to see all exhibition room.